



Collaborating Across the Institution to Promote the Library

*Kristi Holmes, PhD
Director, Galter Health Sciences Library
Associate Professor, Preventive Medicine-Health and
Biomedical Informatics*

10 November 2016
AAHSL Annual Meeting – Seattle, WA

Galter Health Sciences Library

Northwestern Clinical and Translational Sciences Institute (NUCATS)

The screenshot shows the homepage of the Northwestern University NUCATS (Northwestern Clinical and Translational Sciences Institute) website. The header includes the NUCATS logo, a search bar, and navigation links for participating institutions (Northwestern, Northwestern Memorial HealthCare, Northwestern Medicine, Ann & Robert H. Lurie Children's Hospital of Chicago, and RIC). The main navigation bar contains links for About NUCATS, Centers & Programs, Resources & Services, Funding, Education & Career Development, and Galter Library, which is circled in red. The main content area features a large yellow banner for the 'SEX CELLS' workshop and symposium, with details about registration and abstract submission. Below this, there are sections for 'I AM' (New Faculty, Investigator/Research Staff, Student/Trainee, Industry Professional, Community Member or Organization, Patient or Research Participant) and 'I NEED' (Research Training, Data or Research Software, Research Study Assistance, Connections with Collaborators, Information about Research Studies). The footer includes a 'Questions?' section with a contact link, a 'Quick Links' section with various resources, a 'News' section with tweets, a 'Calendar' section with upcoming events, and a 'CTSA Clinical & Translational Science Awards' section.

Northwestern University
NUCATS
Clinical and Translational Sciences Institute

A CTSA partner in accelerating health

Participating Institutions: Northwestern, Northwestern Memorial HealthCare, Northwestern Medicine, Ann & Robert H. Lurie Children's Hospital of Chicago, RIC

About NUCATS | Centers & Programs | Resources & Services | Funding | Education & Career Development | **Galter Library**

SEX CELLS

Sex Inclusion in Biomedical Research Workshop & Symposium

Register and submit an abstract for the event on January 25

I AM
New Faculty
Investigator/Research Staff
Student/Trainee
Industry Professional
Community Member or Organization
Patient or Research Participant

I NEED
Research Training
Data or Research Software
Research Study Assistance
Connections with Collaborators
Information about Research Studies

Questions?
Contact a NUCATS Navigator

Quick Links
myNUCATS (Join Now or Log In)
Navigator Consultation Form / Studies
New Faculty Onboarding
Voucher and Pilot Programs
Chicagoland CTSA Shared Resources
Cite NIH CTSA Grant
NUCATS FAQs
NUCATS Minute
REDCap Intro Session & Office Hours
Sign Up for Clinical Trials

News
Tweets by @NUCATSInstitute
NUCATS Institute @NUCATSInstitute
@NUFeinbergMed study is looking to see if an antibody could slow #memory loss related to #Alzheimer's Disease ow.ly/CGib305Z5Hz #ctsa
NUCATS Institute @NUCATSInstitute
Looking for the latest NUCATS news? Read our monthly newsletter for info on events, funding opportunities, and more. ow.ly/8s49305YSla
NUCATS Institute Retweeted
IPHAM@NorthwesternU @nu_ipham

Calendar
NOV 10 IPHAM Seminar Series: "Strategies for Community & Stakeholder Engagement in Research: Presented by the Center for Community Health." 12:00pm - 2:00pm
NOV 10 REDCap New Project Owner Intro Session 2:00pm - 3:00pm
NOV 10 REDCap New Project Owner Intro Session 2:00pm - 3:00pm
NOV 14 Navigating the Research Enterprise (formerly known as First Mondays) 12:00pm - 1:00pm
more events »

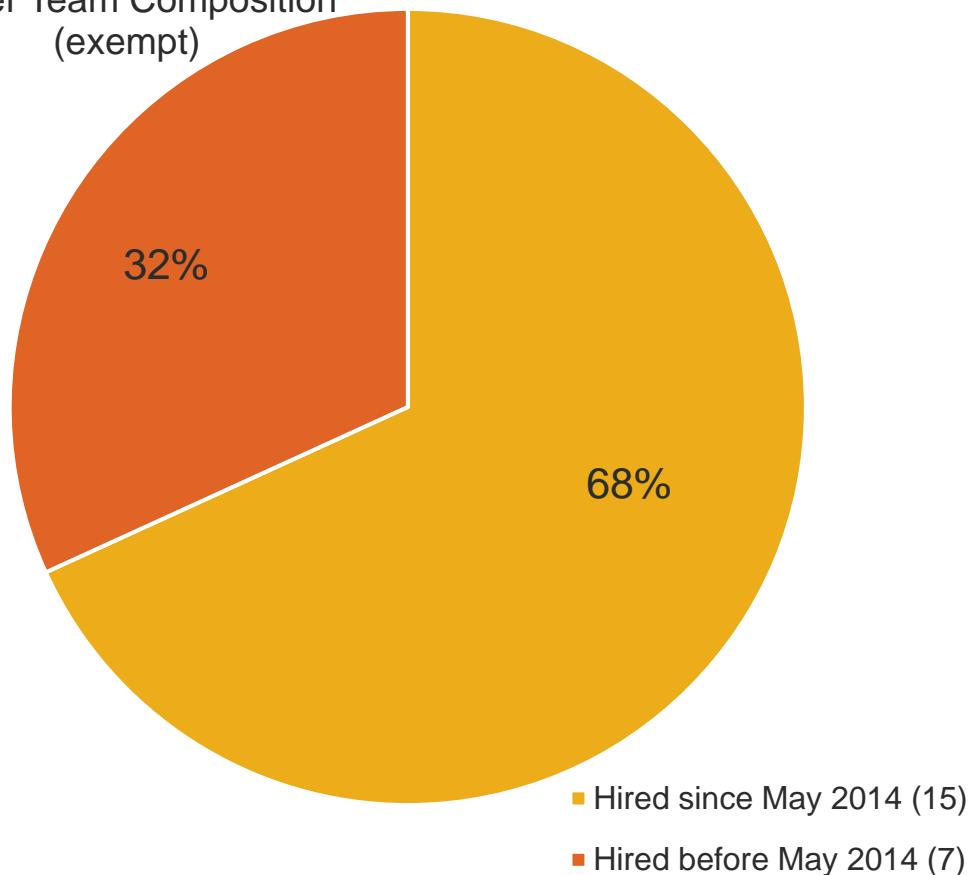
CTSA Clinical & Translational Science Awards

Impact
Share how NUCATS supports your research

Challenges

A quickly growing team and evolving areas of emphasis

Galter Team Composition
(exempt)



Galter Library

Education and
Curricular Support

Clinical Support

Research Support

Compliance

Research Impact &
Evaluation

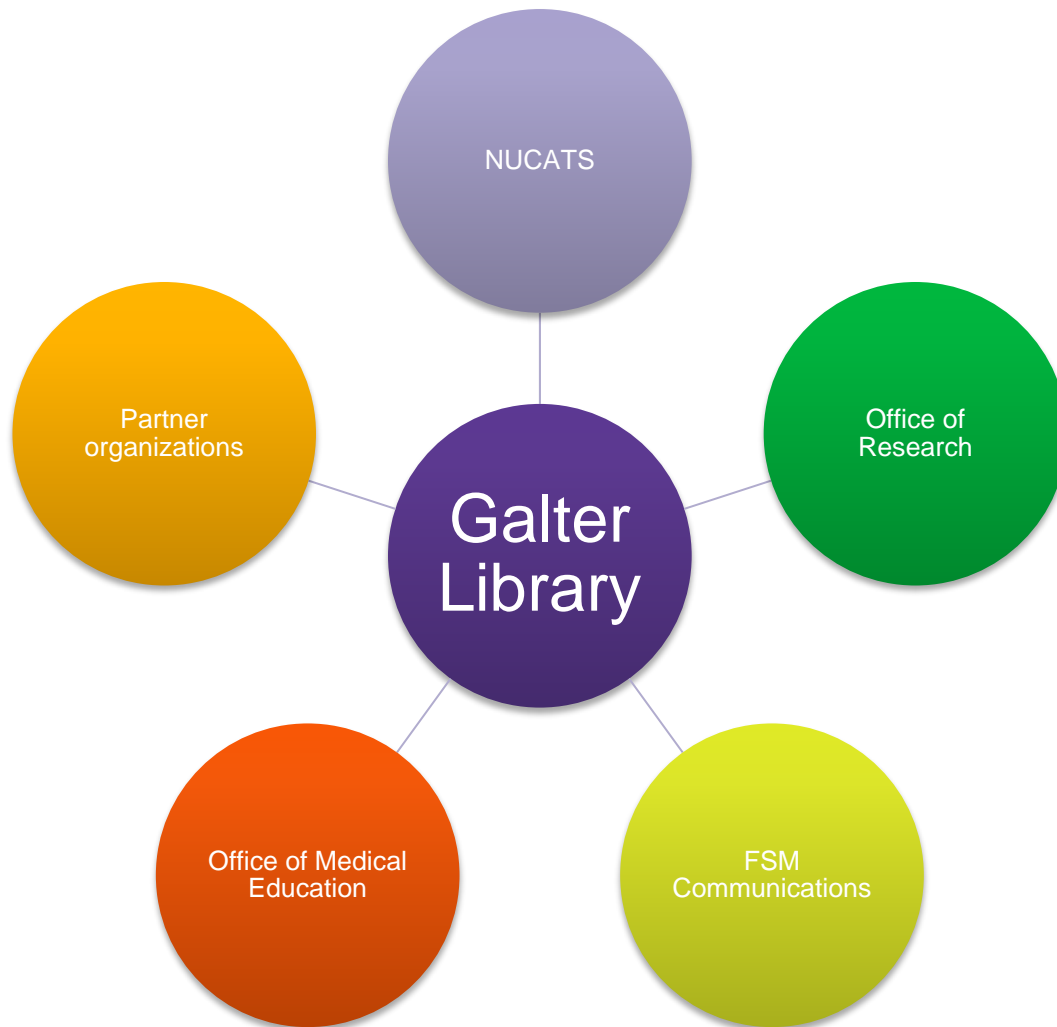
Digital Initiatives

Preserving Our
Heritage

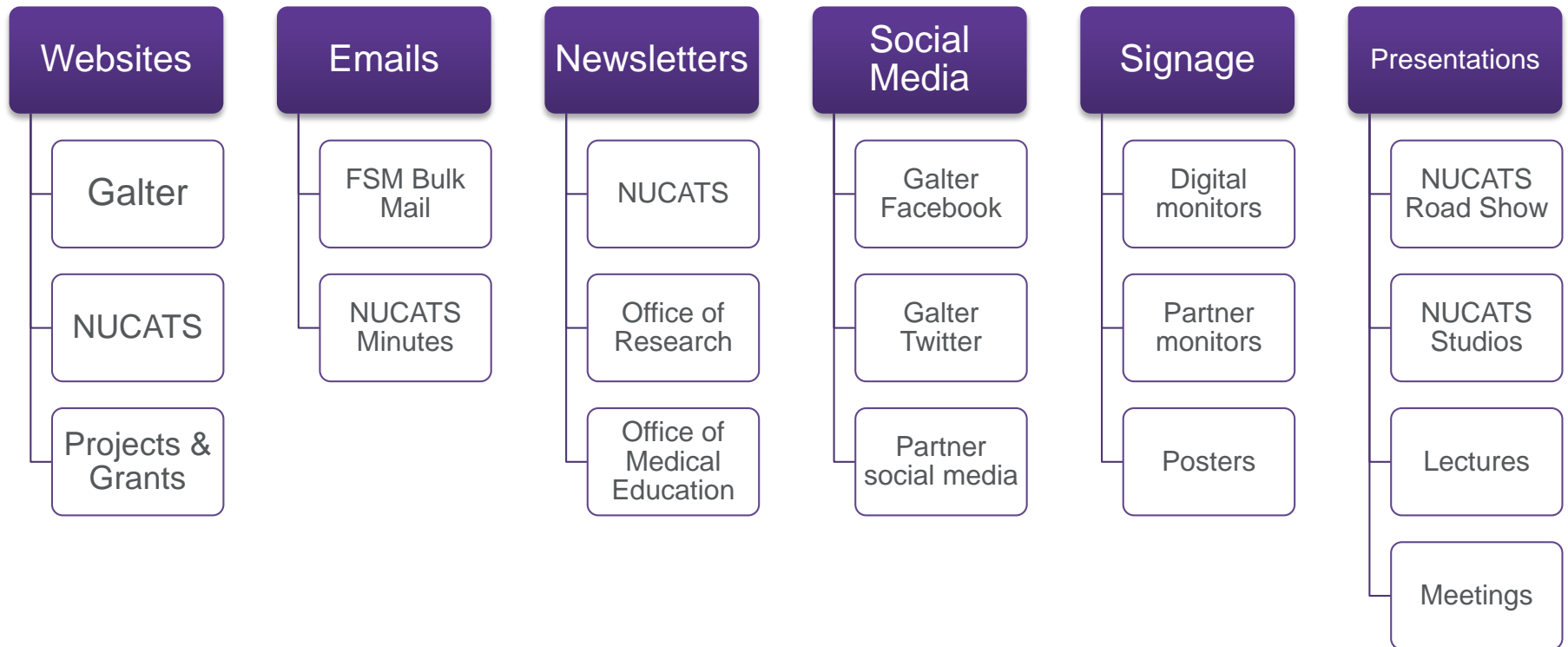
Renovation

Approach

Marketing the library is a team sport



Communication Vehicles



“write and reuse” whenever possible

Some examples...

Office of Communications – web messaging



Northwestern University | Faculty Profiles

Northwestern University Feinberg School of Medicine

News Center

galter



News Center Home

Categories ▾

Media Coverage

Editor's Picks ▾

News Archives

About Us ▾

YOU ARE AT: Home » Search Results for "galter" Query

Search Results: galter (35)



JAN 25, 2016

Northwestern 10th in World Ranking of Highly Cited Researchers

Northwestern University ranks 10th among worldwide institutions with the most highly cited researchers in 2015. The Thomson Reuters analysis includes nine Feinberg faculty members.



MAY 15, 2015

Science Maps on Exhibit at Galter Library Embrace the Power of Data

One hundred maps guide exploration of both the physical world and abstract ideas in Places & Spaces: Mapping Science, a visiting exhibit on display at the Galter Health Sciences Library through September 23, 2015.



JUL 11, 2014

Northwestern Ranks 14th Worldwide for Highly Cited Researchers

With 29 researchers on the list – six of them scientists from Northwestern University Feinberg School of Medicine – Northwestern ranks 14th among institutions with the highest number of highly cited researchers.



MAR 10, 2014

New Director of Galter to Strengthen Informatics Efforts at Library

Kristi Holmes, PhD, joins the medical school from Washington University in St. Louis, where she was a bioinformaticist focused on research impact and genomic medicine.

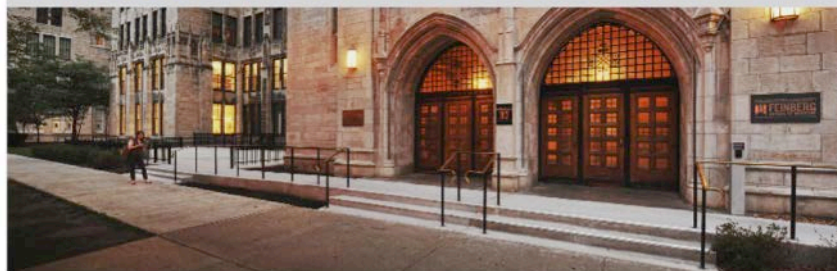
Office of Research

Galter Library Connections in Breakthroughs newsletter

Galter Connection - Breakthroughs

October '16	<i>Investigators Find Success with the DigitalHub</i>
Sept '16	<i>Understanding Citation-Related Metrics</i>
August '16	<i>Keeping Track of Your Work</i>
June '16	<i>NIH Biosketch: Contributions and Capabilities</i>
May '16	<i>Dissemination of Research in the Wild World Wide Web</i>
April '16	<i>Galter Library Connection: Liaison Librarians</i>
March '16	<i>FAQs About NIH Public Access Compliance and PMCIDs</i>
Dec '16	<i>Sharing, Publishing and Archiving Your Work</i>
Nov '15	<i>Informatics Support and Software at Galter Health Sciences Library</i>
October '15	<i>Galter Health Sciences Library Launches Digital Repository for Scholarly Outputs</i>
Sept '15	<i>Choosing a Journal and Making a Match</i>
August '15	<i>Writing About Your Impact in the New NIH Biosketch</i>

NIH Biosketch: Contributions and Capabilities



Last year Galter Library offered a class called "How to Prepare a New NIH Biosketch." The response was overwhelming; we had found a topic that perplexed and challenged the FSM community. Now the new NIH Biosketch is almost a year old and no longer new to most researchers. But that hasn't ended our curiosity in how researchers craft their contributions to science in the NIH biosketch.

Mindset has something to do with it

Many researchers feel burdened when asked to write about their contribution to science. Some operate in a scarcity mindset, their modesty preventing them from accessing the wealth of topics available. Others view their research as a whole and struggle to tease out pieces to form multiple contributions. Others need to pare down their series of contributions and wrestle with decisions to combine or remove contributions from the list.

After reviewing biosketches this year, we've compiled some thoughts for each of these mindsets. Regardless of which mindset you may (or may not) fall into, we urge researchers to share their biosketches with colleagues, who can provide feedback regarding content and interpretation.

The 'modesty' mindset:

Some researchers fret over their publication list and miss out on the full range of their contributions: giving international or national presentations, developing open source software, creating educational materials for students or trainees. These contributions show a rich competency in communicating science by making information more open and accessible to the entire research community.

If your publication list is short, or doesn't adequately support your written contribution, consider highlighting other non-publication research products: audio or video products; patents; data and research materials; databases; educational aids or curricula; instruments or equipment; models; protocols; and software or network.

The 'research as a whole' mindset:

If you have trouble writing more than one contribution, consider how you talk about your work. Think about how you break up ideas to keep the listener from becoming overwhelmed. For each of those ideas, consider answering the questions framed by the biosketch instructions for contributions:

- What is the historical background that frames the scientific problem?
- What were your central finding(s)?
- How have the finding(s) influenced the progress of science or been applied to health or technology?
- What was your specific role in the described work?

The 'too much to communicate' mindset:

If you've identified too many contributions, you may be tempted to delete those extra paragraphs. Don't do it! Every grant you apply for is different, each requiring a biosketch that perfectly frames your contributions and capabilities. Though you can't have more than 5 contributions in one biosketch, you can save that extra text in a separate document or folder dedicated to biosketches and keep a running list for future use.

Putting your work to use

If you've gone to the trouble of writing out your contributions, consider how you can re-use that work in other ways. Consider adding these contributions to your CV or in any online profiles you've created. With a little wordsmithing, you've got a perfect biography for a speaking engagement, or the start of a blog post or podcast about your peer-reviewed research.

If you need further assistance, check out the NIH's [Biosketch FAQ](#), and Galter Library's [NIH Biosketch Guide](#).

Twitter

...is a team sport at Feinberg!



Northwestern University Feinberg School of Medicine

Office of Communications

Home

Brand & Identity ▾

Web Services ▾

Marketing Services ▾

Media Information

About Us

Office of Communications > Brand & Identity > Social Media Guidelines > Twitter

Brand & Identity

Benefits

Logo & Downloads

Email Signature

Portfolio

Web Guidelines

Social Media Guidelines

Social Media Policy for
Medical Students

Facebook

Twitter

Instagram

Twitter

The Office of Communications maintains numerous Twitter lists including faculty, staff, students, friends, peers, and affiliates. We encourage you to introduce yourself to the official feed (@NUFeinbergMed) so that you may be considered for inclusion on one of these publicly available lists.

You will find the official Feinberg Twitter page at:

► **Feinberg Twitter Page***

***The Feinberg Twitter feed** is administered by the **Office of Communications**. We encourage you to be among the first followers and share our Twitter presence with your peers and colleagues. We also encourage your unit to interact with our tweets and share information when you can.

The official Northwestern University Twitter Page is at:

► **Northwestern University Twitter Page**

Here are some other examples of medical school-related Twitter pages, administered by separate groups:

► **Dr Teresa K Woodruff**

► **NUCATS Institute**

► **Galter Library**

NU Feinberg Medicine Retweeted

NUCATS Institute @NUCATSInstitute · Oct 19

Attend an info session, hear presentations and eat cake to celebrate Digital Hub's first birthday! @NUFeinbergMed @Research

Galter Library @galterlibrary

Happy first birthday to DigitalHub, @NorthwesternMed's institutional repository. Celebrate with us on October 26! galter.northwestern.edu/News/happy-fir...

NUCATS Institute @NUCATSInstitute · Sep 15

.@galterlibrary's librarians share lessons learned while supporting #translationalresearch in new book ow.ly/tWpx3044Ayt #CTSA

Kristi Holmes @kristiholmes

Transforming @galterlibrary! Learn more at feinberg.northwestern.edu/giving/stories ... @NUCATSInstitute #medlibs

RETWEET 1 LIKES 4

7:37 PM - 29 Oct 2015

Kristi Holmes @kristiholmes · Sep 1

Great week @NUFeinbergMed (& *in* @galterlibrary!) with @NIHDirector & @SenatorDurbin visit. Such strong advocates for research! #medlibs

RETWEET 1 LIKES 7

NUCATS Institute @NUCATSInstitute · 28 Aug 2015

Ever heard of a clinical informationist? @galterlibrary's new addition will further clinical endeavors at @NMHnews bit.ly/1UYmzk6

RETWEET 4 LIKES 3

DigitalHub

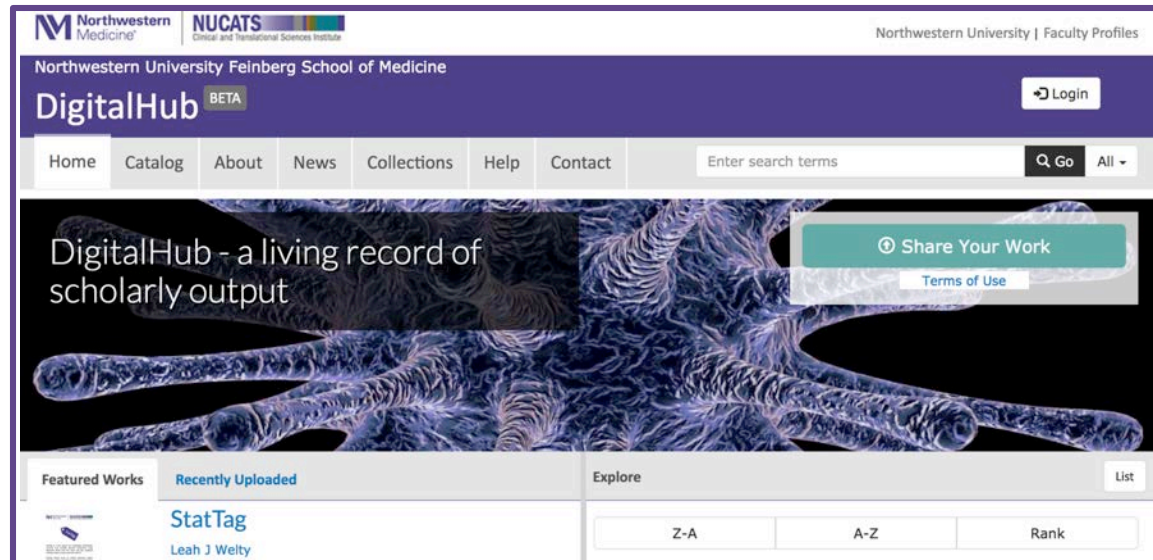
Institutional Repository



Highlights:

- [Statistical Considerations in Basic Science Sex Inclusive Research](#)
- [Pediatric Neurology Briefs](#)
- [Science in Society Scientific Images Contest](#) gallery
- [StatTag](#) reproducible research plug-in
- Galter outputs!

<https://digitalhub.northwestern.edu>



- DOIs for all deposited objects provide secure and long term preservation, easy citation, and persistent access.
- Metrics for deposited items, management of licensing, enhanced discoverability, and support for large dataset deposit.
- Need help using DigitalHub? Want to upload large datasets? Questions about what the repository will accept or how to share your research more widely?
<https://digitalhub.northwestern.edu/contact>

How do we know that it is working?

Track metrics across different vehicles

Analytics for emails and newsletters from various sources are available.

Some specific “webometrics” tracked include: the open rate and click thru rate for each mailing, the number of clicks on each article that is in the email/newsletter, geography/domain of access, downloads.

How do we know that it is working?

Track metrics across different vehicles

NUCATS “Minutes” emails...

DigitalHub Accepts Datasets

The DigitalHub repository now supports deposit of datasets associated with publications to help investigators comply with journal data sharing policies. DigitalHub supports a variety of compression formats and rights statements to meet your needs. Learn more at digitalhub.northwestern.edu/news or contact DigitalHub support directly at DigitalHub@northwestern.edu.

Research Impact

Want to learn more about who's citing your work, your h-index, and the journals with the highest impact in your field? Sign up for Galter Library's [Scopus and Web of Science classes](#) this September. Scopus and Web of Science are citation databases that go beyond PubMed and can help you assess your research impact. Sign up here: galter.northwestern.edu/classes

Date	Topic	Center	Open Rate
7-Sep-16	responsible conduct of research	cecd	41.53%
19-Oct-16	gcp course	admin	40.66%
5-Oct-16	bcc lecture series	bcc	39.19%
8-Jun-16	i2b2	cdsi	39.00%
31-Aug-16	pcori funding	cch	38.48%
14-Sep-16	practice based research	cch	38.07%
27-Jul-16	Budget workshops	ccr	37.60%
12-Oct-16	venture capital workshop	invo	37.36%
10-Aug-16	digital hub accepts datasets	galter	36.97%
3-Aug-16	ARCC dissemination resources	cch	36.69%
17-Aug-16	id community partners	cch	36.56%
28-Sep-16	onboarding	admin	36.05%
24-Aug-16	research impact	galter	35.53%
21-Sep-16	msrc program	cecd	34.80%
13-Jul-16	cancer studies src	admin	33.50%
20-Jul-16	CCH consultations	cch	33.30%
2-Mar-16	tl1	cecd	31.20%
6-Apr-16	ramp challenge	cdsi	30.60%
13-Apr-16	n.xt fund	invo	30.60%
24-Feb-16	CCH Workshop	cch	29.50%



Acknowledgements:

- Galter team – Linda O'Dwyer
- NUCATS team – Camille Vicino and Don Lloyd-Jones
- Communications partners

Related sites:

- <http://www.feinberg.northwestern.edu/research/news/newsletter/>
- <https://galter.northwestern.edu/news>
- <https://nucats.northwestern.edu/about/newsroom/minutes>

Credits:

- <http://chicago.suntimes.com/sports/a-city-of-mvps-cubs-fans-pack-world-series-parade-rally>
- <http://chicago.suntimes.com/sports/chicago-cubs-stage-musical-in-the-works>
- <http://www.bbc.com/news/world-us-canada-37856319>
- <https://i.ytimg.com/vi/TZcNLnOJafY/maxresdefault.jpg>
- <http://i.huffpost.com/gen/1339922/images/o-DOG-FOOD-facebook.jpg>



Thank you!

Kristi Holmes
kristi.holmes@northwestern.edu